

Conference Systems





Stand-alone TOA conference systems

are designed for maximum reliability and ease of use.

Built with a minimum of complexity to enable trouble-free installation and operation, these systems enable conferences to be set up and staged quickly and effectively.



TOA began developing conference systems in 1978.

Over the years, we have accumulated a wealth of experience and achievements that have earned our company an excellent reputation for providing highly reliable systems that are easy to use.

At TOA, we will continue to offer a full product lineup to support the smooth management of conferences.

Advanced Conference System



Wired or Wireless Units for System Flexibility

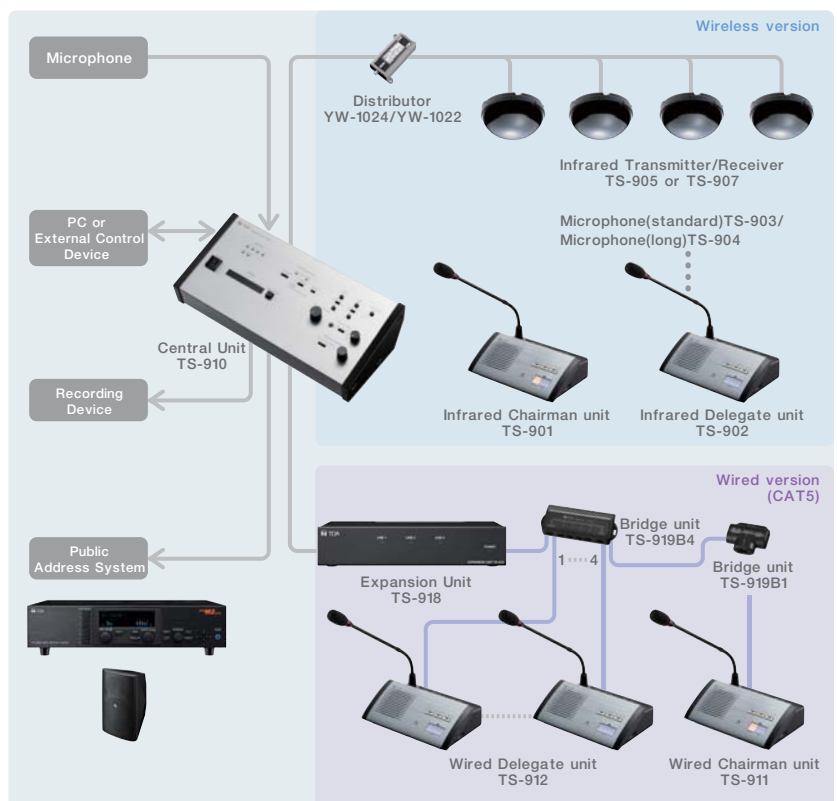
TS-910 series



System Benefits

- No worries about radio interference, eavesdropping, or information leakage, thanks to wireless system's IR communication method.
- Versatile Cat 5 cable connection available for wired units.
- Suitable for either permanent or temporary installation.
- Failure in one terminal unit does not affect other units.
- System can be controlled by external equipment via RS-232C and USB port.
- Individual control of units possible by assigning unit addresses.
- Exceptional sound quality.
- Connect a recording device for high-quality audio recording of conferences.
- Triple choice vote function.
- Bilingual conference capability.
- Built-in feedback suppressor for more efficient reduction of acoustic feedback.
- Stable and stylish hardware design.
- When speaker is on, chairman/delegate unit mic is turned off automatically to avoid feedback, and vice versa.

System Example



with Added Security and Flexibility



Easy Cable-Free Installation

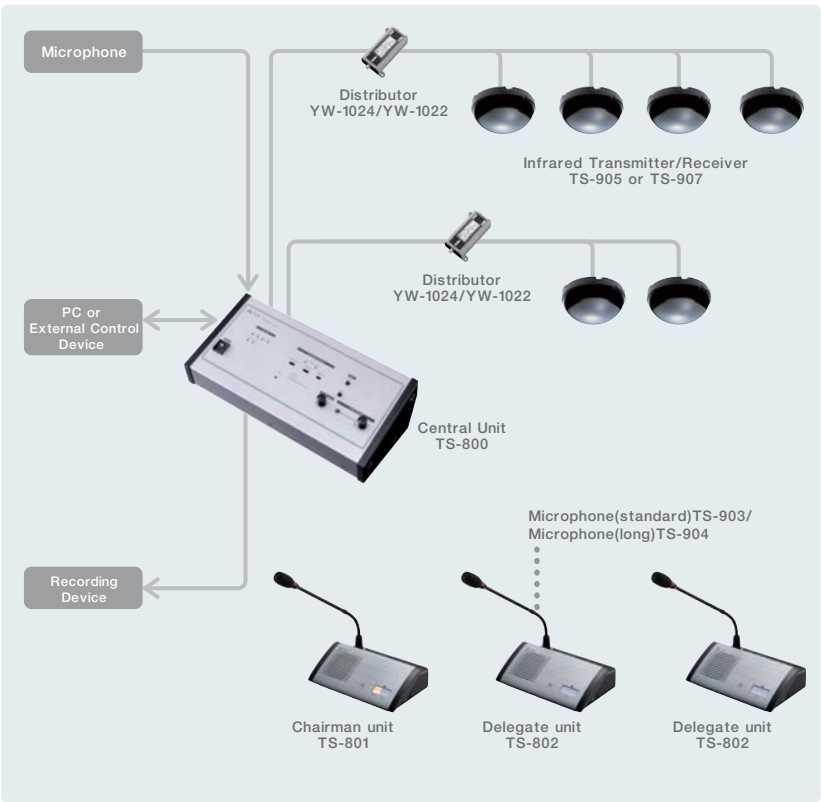
TS-800 series



System Benefits

- Flexible and easy configuration in different rooms and with varied participant numbers.
- No worries about radio interference, eavesdropping, or information leakage thanks to IR communication method.
- Suitable for either permanent or temporary installation.
- System can be controlled by external equipment via RS-232C.
- Individual control of units possible by assigning unit addresses.
- Exceptional sound quality.
- Connect a recording device for high-quality audio recording of conferences.
- Stable and stylish hardware design.
- When speaker is on, chairman/delegate unit mic is turned off automatically to avoid feedback, and vice versa.

System Example



Superb Conference Functionality in an Easy and Affordable System



Built-in MP3 Recorder for Quick Conference Recording

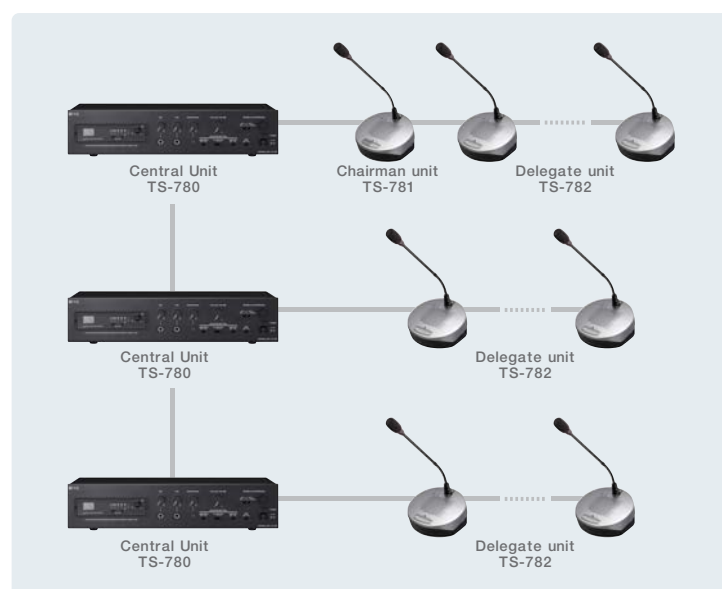
TS-780 series



System Benefits

- Plug-and-play system.
- Up to 64 units can be attached to a single Central Unit.
- System expandable to 192 units by connection of 3 Central Units.
- Test function allows connections to be accurately verified.
- Conferences can be recorded onto SD card or external recording device.
- Built-in feedback suppressor for more efficient reduction of acoustic feedback.
- External equalizing capability.
- Compact and stable hardware design.

System Example



Simple and Compact Wired Conference System

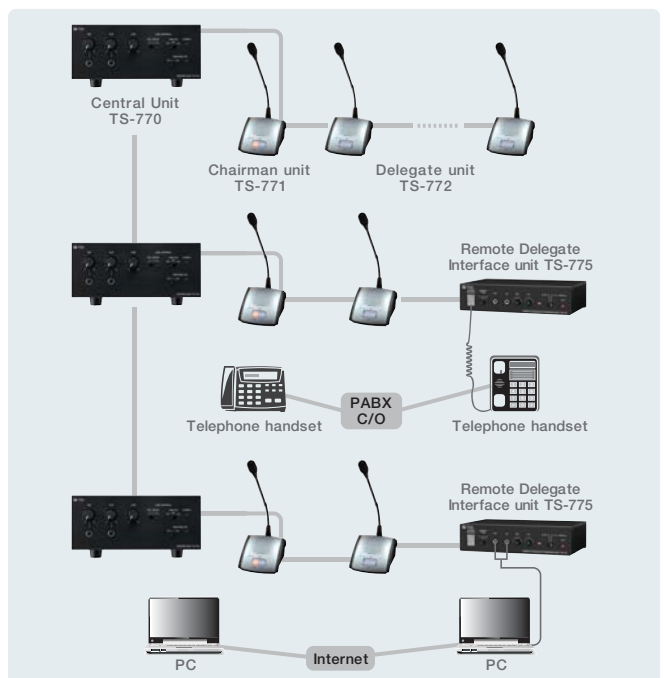
TS-770 series



System Benefits

- Plug-and-play system.
- Up to 70 units can be attached to a single Central Unit.
- System expandable to 210 units by connection of 3 Central Units.
- Connect a recording device for high-quality audio recording of conferences.
- Test function allows connections to be accurately verified.
- Remote Interface Unit facilitates teleconferences.

System Example



Specifications

*0dB = 1V

TS-910 Central Unit		TS-800 Central Unit	
Input	2 x Mic: -60dB*, 600 ohms, unbalanced, phone jack 3 x AUX: -20 dB*, 10k ohms, unbalanced, phone jack	1 x Mic: -60dB*, 600 ohms, unbalanced, phone jack 1 x AUX: -20 dB*, 10k ohms, unbalanced, phone jack	
Output	1 x Line: -20dB*, unbalanced, phone jack 2 x Recording: -20dB*, 10k ohms, unbalanced, phone jack/RCA pin jack 1 x Headphone: mini jack	2 x Recording: -20dB*, 10k ohms, unbalanced, phone jack/RCA pin jack 1 x Headphone: mini jack	
External EQ	Input: -20dB*, 10k ohms, RCA pin jack Output: -20dB*, 10k ohms, RCA pin jack	- -	
No. of connectable Chairman/Delegate Unit	192	64	
External Control Terminal	D-sub connector (9P, male)/USB-B selectable	D-sub connector (9P, male)	
Function Switch	Speaker restriction: set to 1,2,3 and 4 Mic-off function: off or on (selectable) Speech priority selector A/B/C A: First-in-first-out, B: Last-in-first-out, C: Fixed for the first unit and last-in-last out for the subsequent units FBS selection: External/Off/Auto/Manual	Speaker restriction: set to 1,2 and 4 Mic-off function: off or on (selectable) Speech priority selector A/B/C A: First-in-first-out, B: Last-in-first-out, C: Fixed for the first unit and last-in-last out for the subsequent units	
Applicable Unit	TS-901/902/911/912, TS-801/802/811/812	TS-801/802	
Dimensions	359(W) x 118.8(H) x 184.7(D) mm (14.13" x 4.68" x 7.27")	359(W) x 118.8(H) x 184.7(D) mm (14.13" x 4.68" x 7.27")	
Weight	2.8 kg (6.17 lb)	2.7 kg (5.95 lb)	

TS-901 Chairman Unit	TS-902 Delegate Unit	TS-801 Chairman Unit	TS-802 Delegate Unit	TS-911 Chairman Unit	TS-912 Delegate Unit	TS-811 Chairman Unit	TS-812 Delegate Unit
Power Source	7.4V DC (battery) or 9V DC (AD-0910 AC adapter)			24V DC (supplied from the optional TS-918 Expansion Unit)			
Input	Microphone terminal: XLR-4-31 type			Microphone terminal: XLR-4-31 type			
Output	Monitor speaker: 8 ohms, 0.2W Headphone: Mini jack x 2			Monitor speaker: 8 ohms, 0.2W Headphone: Mini jack x 2			
Battery Life	Approx. 10 hours			-			
Connection Terminal	-			RJ45 connector			
Function	Monitor speaker volume Headphone volume Priority speech function Voting function Monitor selector switch	Monitor speaker volume Headphone volume Voting function Monitor selector switch	Monitor speaker volume Headphone volume Priority speech function	Monitor speaker volume Headphone volume Priority speech function Voting function Monitor selector switch	Monitor speaker volume Headphone volume Voting function Monitor selector switch	Monitor speaker volume Headphone volume Priority speech function	Monitor speaker volume Headphone volume
Dimensions	210(W) x 65.9(H) x 152(D) mm (8.27" x 2.59" x 5.98")						
Weight	640g (1.41 lb)						

TS-780 Central Unit		TS-770 Central Unit	
Input	1 x Mic: -60dB*, 600 ohms, unbalanced, phone jack 1 x AUX: -20 dB*, 10k ohms, unbalanced, phone jack	1 x Mic: -60dB*, 600 ohms, unbalanced, phone jack 1 x AUX: -20 dB*, 10k ohms, unbalanced, phone jack	
Output	3 x Recording: -20dB*, 10k ohms, unbalanced, phone jack/RCA pin jack x 2 1 x Headphone: mini jack	3 x Recording: -20dB*, 10k ohms, unbalanced, phone jack/RCA pin jack x 2	
External EQ	Input: -20dB*, 10k ohms, RCA pin jack Output: -20dB*, 10k ohms, RCA pin jack	- -	
No. of connectable Chairman/Delegate Unit	192	210	
Function Switch	Speaker restriction: Delegate unit's simultaneous operation set to 0,1,2,3 and 4 Mic-off function: off or 30 sec. (selectable) FBS selection: External/Off/Auto/Manual MP3 recording and playback	Speaker restriction: Delegate unit' simultaneous operation set to 0, 1, 3 and 6 Mic-off function: off, 20 sec or 40 sec, (selectable)	
Applicable Unit	TS-781/782	TS-771/772	
Dimensions	420(W) x 96.1 (H) x 226.2(D) mm (16.54" x 3.78" x 8.91")	210(W) x 107.1 (H) x 316 (D) mm (8.27" x 4.22" x 12.44")	
Weight	3 kg (6.61 lb)	4 kg (8.82 lb)	

TS-781 Chairman Unit	TS-782 Delegate Unit	TS-771 Chairman Unit	TS-772 Delegate Unit
Power Source	35V DC (supplied from TS-780 Central Unit)		35V DC (supplied from TS-770 Central Unit)
Input	Microphone terminal: XLR-4-31 type		
Output	Monitor speaker: 130 ohms, 200 mW Headphone/Recording: Mini jack x 2	Monitor speaker: 130 ohms, 200 mW Headphone/Recording: Mini jack x 1 Contact output: 24C DC, Max 50mA	
Connection Terminal	DIN 8P connector		
Function	Monitor speaker volume Headphone volume Priority speech function	Monitor speaker volume Headphone volume Priority speech function	Monitor speaker volume Headphone volume
Dimensions	145.3 (W) x 70.7 (H) x 150.5(D) mm (5.72" x 2.78" x 5.93")		114.5(W) x 78.4(H) x 152.9(D) mm (4.51" x 3.09" x 6.02")
Weight	800 g (1.76 lb)		560 g (1.23 lb)

Other System Components		
TS-910 Series	TS-918 Expansion Unit	
	TS-919B4 Bridge Unit	
	TS-919B1 Bridge Unit	
	MB-15B-BK Rack Mount Bracket	Bracket for TS-918
	MB-15B-J Rack Mount Bracket	Bracket for TS-918
TS-910/800 Series	TS-903 Microphone	368 mm (1.21 ft) length
	TS-904 Microphone	518 mm (1.7 ft) length
	TS-905 Infrared Transmitter/Receiver	150°(vert.) x 360°(hor.) reception angle
	TS-907 Infrared Transmitter/Receiver	90°(vert.) x 360°(hor.) reception angle
	BP-900 Rechargeable Lithium-ion Battery	
	BC-900 Battery charger	
	AD-0910 AC Adapter	
	YW-1022 Distributor	to 2 outputs
	YW-1024 Distributor	to 4 outputs
	MB-TS900 Rack Mount Bracket	Bracket for TS-910/800

Other System Components		
TS-780 Series	TS-773 Microphone	368 mm (1.21 ft) length
	TS-774 Microphone	518 mm (1.7 ft) length
	YR-780-2M Extension Cord	2 m (6.56 ft) length
	YR-780-10M Extension Cord	10 m (32.81 ft) length
	MB-23B Rack Mount Bracket	
TS-770 Series	TS-773 Microphone	368 mm (1.21 ft) length
	TS-774 Microphone	518 mm (1.7 ft) length
	YR-770-2M Extension Cord	2 m (6.56 ft) length
	YR-770-10M Extension Cord	10 m (32.81 ft) length
	TS-775 Remote Delegate Interface	

Other System Components

TS-910 Series

Bridge Unit



TS-919B1



TS-919B4

Expansion Unit



TS-918

TS-910/800 Series

Microphone



TS-903

TS-904

Infrared Transmitter/
Receiver



TS-905

Ceiling height:
2.5 - 4.5m



TS-907

Ceiling height:
5 - 7m

Rechargeable
Lithium-ion Battery



BP-900

Battery Charger



BC-900

AC Adapter



AD-0910

Distributor



YW-1022
(to 2 outputs)



YW-1024
(to 4 outputs)

Rack Mount Bracket



MB-TS900

TS-780 Series

Microphone



TS-773

TS-774

Extension Cord



YR-780-2M

YR-780-10M

TS-770 Series

Microphone



TS-773

TS-774

Extension Cord



YR-770-2M

YR-770-10M

Remote Delegate
Interface Unit



TS-775