


## Company Data

(as of March 31,2011)

<b>Company name</b>	TOA Corporation
<b>Incorporated</b>	April 20,1949 (Operations started September 1,1934)
<b>Capital</b>	JPY 5,279 million
<b>President</b>	Kenji Itani
<b>Headquarters</b>	7-2-1 Minatojima-Nakamachi,Chuo-ku,Kobe 650-0046,Japan Tel +81 78 303 5620 
<b>Employees</b>	2,861 (consolidated), 756 (non-consolidated)
<b>Net sales</b>	JPY 33.354 billion (consolidated), JPY 25.882 billion (non-consolidated)
<b>Fiscal year end</b>	April 1 - March 31, every year
<b>Stock exchanges for listed stock</b>	First Section, Tokyo Stock Exchange First Section, Osaka Stock Exchange
<b>Business focus</b>	<ul style="list-style-type: none"> <li>• Production and sales of public and broadcasting equipment, communications equipment and other information transmission equipment</li> <li>• Production and sales of audio and visual equipment and other electrical and electronic devices</li> <li>• Rental, design and installation of above equipment</li> <li>• Rental and management of performance halls and studios, as well as planning and management of musical events</li> </ul>

<b>Major Activities</b>	<b>Sound Business</b>	
	<b>Classification</b>	<b>Major Products</b>
	<b>Public Address Systems</b>	Microphones, amplifiers, speakers, megaphones, background music facilities, emergency PA and General-purpose PA systems, automatic announcement systems, conference systems, railway car PA systems
	<b>Professional Sound Systems</b>	Theater/hall sound systems, digital mixing systems, stage sound systems
	<b>Communications Systems</b>	Intercom systems, telephone application systems, wireless microphone systems, in-store communication systems
	<b>Security Business</b>	
	<b>Visual Systems</b>	CCTV systems, school audio/visual systems
	<b>Others</b>	
		Service parts,real estate,rental
<b>Major Products</b>	April 1 - March 31, every year	
<b>Executives</b>	President,C.E.O.:Kenji Itani SeniorVice President:Kazuhiro Takeuchi Senior Vice President:Yoshinori Masuno Director:Toshihiko Hatanaka Director:Junichi Teramae Standing corporate auditor:Toshio Nishikawa Corporate auditor:Iheiji Ando Corporate auditor:Shigenobu Kobayashi (as of Jun 28,2011)	
<b>Main Banks</b>	The Bank of Tokyo-Mitsubishi UFJ, Ltd., Sumitomo Mitsui Banking Corporation, Mizuho Corporate Bank, Ltd., The Mitsubishi UFJ Trust and Banking Corporation, The Sumitomo Trust and Banking Co., Ltd., etc.	
<b>Basic Management Policy (Three Confidence)</b>	<ul style="list-style-type: none"> <li>• Total confidence of our customers in the use of all products.</li> <li>• Total confidence of our associates in all business transactions.</li> <li>• Total confidence of our employees in all their effort.</li> </ul>	

## Stock information

<b>Total number of shares authorized to be issued</b>	78,820,000
<b>Total number of shares issued and outstanding</b>	35,536,635
<b>Number of shareholders</b>	3,947
<b>Number of shares per trading unit</b>	1,000

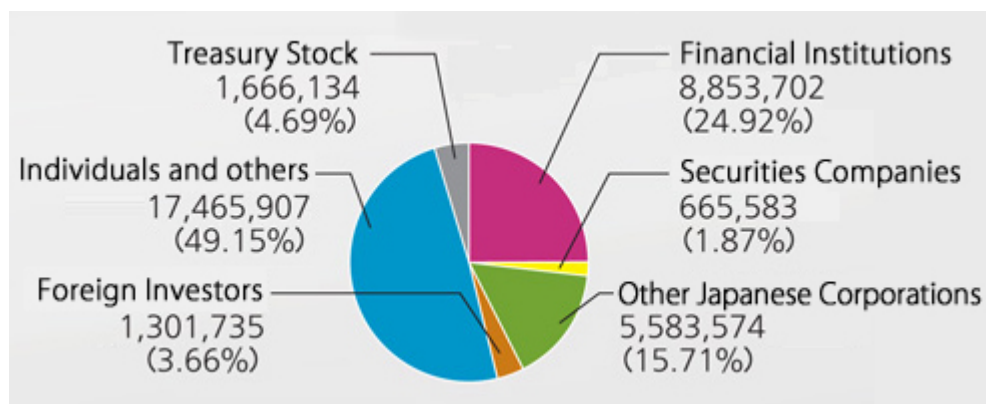
<b>Securities Code</b>	6809
<b>Stock Listing</b>	The Tokyo Stock Exchange, First Section The Osaka Securities Exchange, First Section
<b>Fiscal year</b>	Begins on April 1 of each year and ends on March 31 of the following year
<b>Public Notice</b>	Electronic public notice
<b>Ordinary General Meeting of Shareholders</b>	June of each year
<b>Record dates</b>	Shareholder meeting: March 31 of each year Year-end dividend: March 31 of each year Interim dividend: September 30th of each year

## Major Shareholders

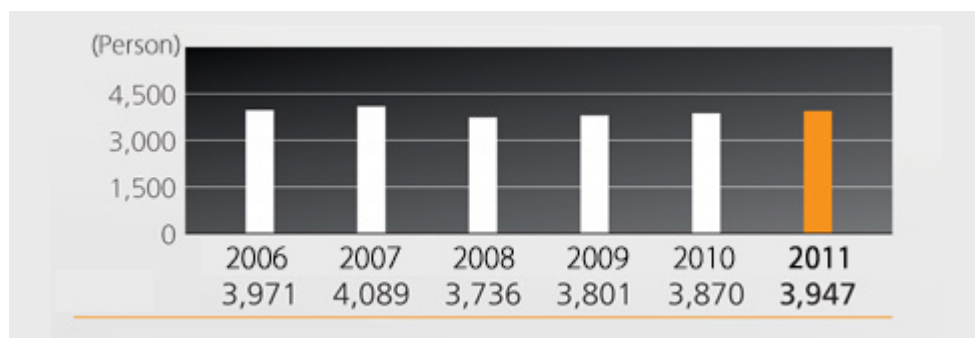
Shareholders	Shares held (Thousands)	Ratio of shareholding (%)
Tadako Nakatani	2,658	7.85
Japan Trustee Services Bank, Ltd. (Trust Account)	2,492	7.36
TOA Clients' Shareholding Association	1,923	5.68
Kenji Itani	1,693	5.00
The Bank of Tokyo-Mitsubishi UFJ, Ltd.	1,681	4.96
SYSMEX CORPORATION	1,457	4.30
Sumitomo Mitsui Banking Corporation	1,188	3.51
Nakatani Electronic Measuring Technology Association of Japan	1,128	3.33
The Master Trust Bank of Japan, Ltd (Trust Account)	1,040	3.07
Hirokazu Itani	893	2.64

## Distribution of shares by shareholder type

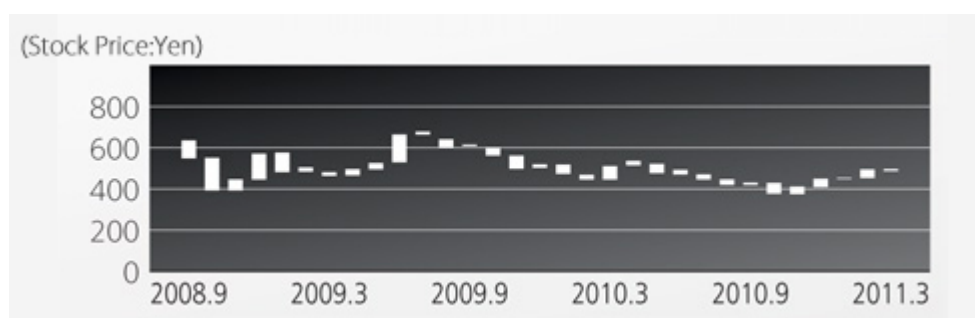
By the number of shares (Shares)



## Change in the number of shareholders



## Common stock price range and trading volume



## Rating information

Bond Rating	Rating institution
BBB+ (Senior long-term debt rating)	Rating and Investment Information, Inc.

## Bonds

The Company had no outstanding bonds as of March 31, 2011.